




# PORTAGE LA PRAIRIE

MANITOBA, CANADA

*Island on the Prairies*

2021/22 VISITOR'S GUIDE



CANADA'S HEART  BEATS

**Manitoba**



Photo by Jodi Lee





We invite you to

# PORTAGE LA PRAIRIE

MANITOBA, CANADA

*Island on the Prairies*

## GET INTRODUCED TO A PORTAGE LA PRAIRIE THAT YOU NEVER KNEW EXISTED.

Both our City and Municipality bear a name that speaks to the famed geography of the Canadian west. Though the friendly wave of wheat fields seems to usher travelers past us to the horizon and beyond, visitors are delighted to discover that Portage la Prairie's attractions and amenities stand out as an island oasis in bold contrast to the serene fields around us.

The vibrancy of our community and the warmth of the greeting our visitors receive combine to create a memorable experience that brings our new friends back again and again. On the following pages, we hope that we have captured some of that magic and we invite you to experience it yourself.

# TABLE OF CONTENTS

ROADSIDE ATTRACTIONS 4

ARTS & CULTURE 6

RECREATION & SPORTS 8

OUTDOOR EXPERIENCES 12

DINING 16

- Dining: Directory 18

CITY MAP 20

EVENTS 24

SHOPPING & Directory 26

HISTORY & HERITAGE 28

ACCOMMODATIONS 30

ATTRACTIONS CHECKLIST 34

BEYOND CITY LIMITS 36





Portage la Prairie Visitor's Guide  
is brought to you by

**PORTAGE REGIONAL ECONOMIC DEVELOPMENT**

800 Saskatchewan Avenue West  
Portage la Prairie, Manitoba R1N 0M8  
Telephone: 204-856-5000  
eoleary@investinportage.ca

**DESIGN**

Tom Powell Design

**EDITORIAL**

Kellie Verwey

**PHOTOGRAPHY**

Cover photo by Madison Connolly  
Special thank you to the Portage Camera Club.  
All other images as individually credited.

**WEBSITE**

[www.islandontheprairies.ca](http://www.islandontheprairies.ca)

**FIND US ON FACEBOOK**

[/IslandonthePrairies](https://www.facebook.com/IslandonthePrairies)

CANADA'S HEART  BEATS  
**Manitoba**

©Portage Regional Economic  
Development. All rights reserved.

# ROADSIDE ATTRACTIONS

One of the first unique structures that catch your eye as you visit Portage la Prairie is the towering presence of what has come to be identified as the **World's Largest Coca-Cola Can**. Located on the southwest corner of the parking lot at Canad Inns Destination Centre, the 85-foot (26 metre) can was first constructed as a water tower by Manitoba Iron Works Limited in Winnipeg in 1905. The structure was relocated to the present site, where it was re-branded by the Coca Cola company and remains a popular curiosity for travelers annually.

Photo by Ted Eisener

Photo by Ed Brecknell





What began as a commissioned art piece to celebrate Manitoba's official bird has become an iconic attraction in the Portage la Prairie region for close to 20 years. **Canada's Largest Great Grey Owl** statue sits perched alertly at 27 Pine Crescent, a collaborative effort of Manitoba artist Jake Goertzen and local owl aficionado Bryan Mitchell. The piece stands thirteen feet high, weighs 2,140 pounds and is composed of an estimated 6,000 individual pieces of steel welded together. The Owl draws both nature and art lovers to see it in person.

At the west end of Crescent Lake, the Long Plain First Nation's Keeshkeemaquah urban reserve is home to the Rufus Prince Building, which formerly served as a residential school. A tribute to the survivors of the residential school system has been erected on the grounds of that site. Resting atop an 85-foot tree, a **12-foot Golden Eagle** looks to the East to signify the beginning of a new day as the sun rises on today's fresh start.



Photo by Dennis Wiens

Island Park is home to two roadside attractions that greet visitors to the southern shores of Crescent Lake. A **Dutch-style windmill** was first erected on site in the 1950's, a project commissioned by the large Dutch population that immigrated here after the second world war to show their appreciation to Portage la Prairie as their new home. While originally functional, the wings were eventually immobilized due to structural concerns. Not far from the windmill, a genuine **Royal Canadian Air Force CT-133 Silver Star** stands in tribute to the community's deep-rooted military ties with the former CFB Portage la Prairie established at Southport from 1942 to 1992.

Just a short drive south of the City at Southport, visitors are welcomed by a **Golden Centennaire** as the newly added gate guard for the airport property. The Golden Centennaires flew out of Southport in previous years and the community felt that it was a fitting tribute to the past and present of their facilities to re-introduce the regal blue and gold jet. The fixture was installed in August 2017.

You won't have to look far to find evidence of the active arts community in Portage la Prairie with the variety of **murals and public art** that are featured throughout the community, adorning the exterior walls of several public and private buildings throughout the region. Take some time to explore and find the piece that speaks most to you.

# ARTS & CULTURE

One needs only to look at the celebrated visual and performing artists that have been produced in Portage la Prairie to recognize the vibrant arts & culture community that exists in our region. This active segment has proven not only attractive to visitors, but also for families looking for a home with these influences that inspire their own passions and create opportunities for their children.

*Photo by Gayle Loewen*



In the heart of Portage la Prairie, Heritage Square represents a hub of arts & culture as well as dining and night life that creates a buzz in our historic downtown. A cornerstone of that district is the **William Glesby Centre**, a 440-seat performing arts facility which hosts numerous concerts and performances throughout the year. Versatile in its set up, the Glesby hosts a wide variety of community events and galas in addition to the main stage schedule. Be sure to visit their website to stay informed of all upcoming acts to appear in Portage at [www.glesbycentre.com](http://www.glesbycentre.com)

While the Glesby Centre provides a professional theatre venue for the performing arts, the **Portage & District Arts Centre** is the mecca for visual artists of all disciplines. Co-located under the same roof as the Glesby Centre, the Arts Centre is home to three galleries – the Main Gallery which displays feature exhibitions and original art from both local and national artists; The Board Room Gallery to showcase local artists, and the latest addition, a pop-up gallery to create more capacity to display the wares of local creators. The Centre also fosters new and emerging artists with classes and workshops held throughout the year. Visit their website for more information at [www.portageartscentre.ca](http://www.portageartscentre.ca)



Started in 2007 to create an awareness of hidden local talent, **Prairie Ripples** is a dynamic group of individuals who promote the arts by sharing their skills, techniques and enthusiasm for art. They host annual Studio Tours, a Fall Arts & Craft Sale, participate in Culture Days activities and support local causes like the Garden Tea Party for Palliative Care. A website and Facebook page keep the public up to date on activities throughout the year, and showcase these energetic artists' work – quality handcrafted pottery, stained glass, inks, acrylics, water colours, woodworking, quilting, photography, barn wood, jewelry, multi-media. [www.prairieripples.com](http://www.prairieripples.com)

From the latest Hollywood blockbuster to the heart-warming all ages films, **Prairie City Cinema** is open seven nights per week and offers the hottest movies in theatres. Offering five screens, and equipped with Dolby© & Digital Surround Sound, every seat is the best seat in the house. To find out what's playing now and what's coming soon, visit their website at [www.portagemovies.ca](http://www.portagemovies.ca)



Photo by Geoff Fierce

# RECREATION & SPORTS



Considered by many to be the gem of our region, The Island was created by an oxbow lake that was once part of the Assiniboine River, setting the stage for one of the most picturesque recreation spaces you'll ever visit. With tennis courts, a disc golf course, a fantastic playground, and outdoor bandstand for public use, the park also offers sheltered and open picnic areas in addition to some of the destination attractions that entice visitors from far and wide, including:

The arrival of summers brings the opening of **Splash Island**, an outdoor water park offering two giant waterslides, a doublewide kiddie slide, mini geysers and a therapeutic "bubbler" bench. With a zero-depth beach style entry, the park presents an aquatic experience that is fun and accessible for all ages and ability levels. From June to September, public swimming is available seven days per week, weather permitting. [www.SplashIsland.ca](http://www.SplashIsland.ca)

Considered by enthusiasts to be challenging but enjoyable, the **Portage Golf Club** is home to an 18-hole lakeside course first established in 1922. With a fully licensed clubhouse, on site pro shop and offering rental carts and clubs, you're sure to test your skills on this Par 70, 6355-yard course. To book your tee time or for more information, visit [www.portagegolfclub.ca](http://www.portagegolfclub.ca) or call 204-857-6177.

While best known as the hosts of one of Manitoba's longest running agricultural fairs, the **Portage Exhibition Grounds** offer seasonal and year-round amenities for visitors. In addition to the two outdoor exhibition arenas, the Portage Ex is home to a 45 serviced (water/electricity) camping sites, the MNP Exhibition Building which can accommodate groups of up to 600, and offer a great natural outdoor space for weddings and special events. Discover more at [www.portageex.com](http://www.portageex.com) or call 204-857-3231.



Photo by Dennis Wiens



Photo by John Nielsen

For visitors of all ages that want to get active, **Stride Place** is a hub of activity all year long. Inside, the Shindleman Aquatic Centre offers Manitoba's largest indoor wave pool, zero-depth beach entry, hot tub, lazy river and a large indoor waterslide. The aquatic feature is only the beginning for the facility which also includes two NHL regulation size arenas, a 4,000 square foot fitness centre and other special event facilities that can host a variety of conferences, trade shows and receptions. Their website [www.strideplace.ca](http://www.strideplace.ca) features even more information. You can reach them by phone at 204-857-7772.

Surrounding Island Park, the **Crescent Walking Path** offers both a scenic vista for walking and biking along the north shore of Crescent Lake, but also a great fitness and wellness route. The 5.2 kilometer walkway is paved, illuminated and accessible 24 hours per day throughout the year.

## RECREATION & SPORTS

Southport, located 3 kilometers south of the City, is a not-for-profit airport, property management and development company. With a focus to be a world-class business center balanced with lifestyle, wellness, and recreation facilities, the **Central Plains RecPlex** features a 9 meter rock climbing wall, 110 m indoor track, fitness area, upgraded gymnasium access and remodeled change rooms. Southport is also home to a **nine-hole golf course** and beautiful green spaces which compliment the aviation and aerospace training facilities, research and development of new products, light manufacturing and educational institutions which contribute to Southport's daily activities. To schedule your tee time, call 204-428-3174 or visit [www.southportgolfclub.ca](http://www.southportgolfclub.ca)

A volunteer effort has been the driving force behind the **BDO Centre for the Community** at 390 First Street Northwest since 2010. Primarily open for public ice rentals from October to March, the facility also offers year-round facilities for sports teams and community groups for events all through the year. Visit their website for more information at [www.bdocentre.com](http://www.bdocentre.com)



Photo courtesy of Central Plains Rec Plex



Photo by John Nielsen







Located on site at the Canad Inn Destination Centre, the **Portage Curling Club** is home to an eight-sheet curling rink, offering abundant capacity for hosting league play and bonspiels. With abundant indoor seating as well as viewing available from the adjacent Tavern United, you're sure to enjoy your visit as both a player as well as a spectator. You can reach the club manager at 204-857-5411.

The Manitoba Junior Hockey League's **Portage Terriers** have an illustrious history on the ice and in our community. The club has produced many successful players who have gone on to the professional circuit and who have left a lasting legacy here in central Manitoba. To find out the schedule and catch a game, visit [www.portageterriers.com](http://www.portageterriers.com) or call 204-857-7772.



Photo by John Nielsen

# OUTDOOR EXPERIENCES

**T**ravelers crossing Manitoba via the Trans-Canada Highway may not realize just how close they are to a magnificent beach, as it seems like the sprawling farmland stretches beyond the horizon in each direction. However, just 25 kilometers directly north of the City, on the northern fringe of the Municipality, the southern shore of Lake Manitoba rolls in on Delta Beach. An intimate population of 200 live at the shore year-round and the beach is a popular destination for day trippers and campers as well. With its newly refurbished camp sites and updated amenities now is a great time to plan an overnight stay.

**DID YOU KNOW,**  
Delta Beach is one of  
Canada's thirteen largest  
lakes and rates as the  
33rd largest freshwater  
lake in the world?  
It's worth a visit!





Photo by Dennis Wiens

A 30 kilometer stretch of wetlands just inland from Lake Manitoba is another popular destination for outdoor enthusiasts. **Delta Marsh** is an active wildlife breeding and migration staging area for a wide array of waterfowl and songbirds. This brings bird watchers from all around the world to get up close to some of the indigenous and seasonal flocks. Even within City limits, Crescent Lake has become a summer home for geese, ducks and pelicans among other friends of a feather, offering up close proximity to view the entire flock from the Crescent walking path and other lakeside vantage points.

**St. Ambroise Beach Provincial Park** offers even more opportunities to get close to the water for a picnic, to watch the migratory birds or to spend the night under the stars. Located near the east end of the Delta Marsh, this destination is highly regarded for its fine sand beach, boardwalk, and boat launch allowing guests to explore both the land and water.



Photo by Dennis Wiens

Sports persons who enjoy **hunting** have also become very familiar with the Portage la Prairie region. In fact, our area's appeal for these activities has even reached California. Hollywood luminaries such as Clark Gable and Tom Selleck have visited to seek Canada geese, snow geese and mallard ducks. Hunting is seasonally permitted on a portion of Delta Marsh and surrounding lands and has in fact inspired a seasonal village, affectionately dubbed "**Tin Town**" in reference to the corrugated metal hunting shacks that have populated a small corner of the wetlands. White tailed deer are another plentiful herd that attracts hunters to this region.



## OUTDOOR EXPERIENCES

Of course, with Lake Manitoba and the active Assiniboine River as well as other water bodies in the area, fishing is another strong draw to the region. Our changing climate throughout the year allows not only for an active **fishing** season during the warm summer months, but also an active ice fishing community in the winter. Visitors cast their lines here in hopes of hooking Walleye, Perch, Northern Pike, Goldeye, Silver Bass and more. Another regularly sought out fishing destination is the **Portage Spillway**, also known as Wayside Park which offers a water recreation spot for boating and fishing as well as a secluded picnic area.



PhotobyFolkedgPhotography

The Portage region is home to a number of great **camping** venues for visitors that want to escape the hustle and bustle and just enjoy the sights and sounds of the prairie landscape. You will find a list of area campgrounds in the Accommodations section (Page 33).



PhotobyDarrenJones

Given our rich agricultural heritage, Portage may be best known for some of the fruits and vegetables that we produce in our area. **Strawberry season** is widely celebrated with visitors coming from a wide radius with empty buckets in hand, looking to get out into the berry patch and select their own berries at the peak of freshness. You'll soon discover why Portage la Prairie is recognized as the "Strawberry Capital of Canada".

Island Park's **Arboretum** stands as a four-acre outdoor venue to learn about more than 200 species of plant life and celebrate the diverse horticulture and forestry that is vital to the prairies. A wheelchair accessible pathway weaves through a series of information stations that identify the natural ecosystem of central Manitoba.

### Here's where you'll find them:

Connery's Farm	204-428-3924
Mayfair Farms	204-857-4581
Munro's	204-428-3100
Patten Acres	204-857-4321
Riverbend Orchards	204-870-1140





# DINING

One of the great delights of travel is the opportunity to sample local cuisine. It is rewarding to discover a dish that you've never had before, prepared with the right mix of ingredients so that each bite seems to dance across your taste buds. Often, a memorable dining experience becomes the highlight of your trip as you recount your adventures with friends and loved ones upon returning home.



Tornado's Restaurant & Lounge

Among its greatest strengths, the Portage la Prairie region is home to a wide variety of culinary delights, from familiar fare to some unique bistros found only here. We're confident that you'll enjoy a local dining experience that is second to none.

### **BILL'S STICKY FINGERS**

For 24 years, this popular bistro has been recognized by locals as the place for ribs in Portage la Prairie, though steak and their house pizza are also among the most frequently ordered favorites. Owner Bill Protopapas attributes the ongoing success of his restaurant to one recipe that he says is not so secret. Focusing on a great product combined with exceptional service is what keeps guests coming back. Dine in or have them cater your event at any venue in town.

[www.billsstickyfingers.ca](http://www.billsstickyfingers.ca)

### **MR MIKES STEAKHOUSE CASUAL**

MR MIKES Steakhouse Casual is about feeling like you belong, where everyone feels comfortable in his or her own way. Enjoy tasty affordable creations like Canada AAA signature steaks, famous Mikeburgers, tasty pastas, big bowl salads, and house-branded wines and beers. Great value. A daily happy hour. No stuffed shirt attitude. Just real people and great food.

[www.mrmikes.ca/locations/portage-la-prairie](http://www.mrmikes.ca/locations/portage-la-prairie)

### **TORNADO'S RESTAURANT & LOUNGE**

The soup is always at Tornado's and there's no questioning the popularity of their signature combination of their house salad with home-made dressing and roasted potato and bacon soup. For ten years, visitors have flocked to Tornado's for their cozy, warm atmosphere and personable service.

[www.tornadosrestaurant.com](http://www.tornadosrestaurant.com)

### **OVER THE COALS**

Over the Coals is a family restaurant offering Greek and Canadian cuisine. Some of their most popular specialties include chicken souvlaki, barbeque pork strips and gyro wraps as well as poutines, subs and salads. One visit and you'll discover why this popular dining spot has been Portage la Prairie's #1 rated restaurant on Trip Advisor since they opened. Enjoy the choice of their licensed dining room, pick up or FREE delivery. Check out their menu on their Facebook page and online.

[www.overthecoals.ca](http://www.overthecoals.ca)

### **CAFÉ ON PRINCE**

Café on Prince opened August 1, 2009 to serve the community of Portage la Prairie fantastic coffee and gourmet lunch offerings. In the heart of downtown, this intimate setting is a desired spot for many to find good company, unwind and enjoy inspired cuisine. The Café on Prince intention is to generate support for our prairie farmers, foragers, brewers, musicians and neighboring businesses. Buying into local, we believe fosters benefit to not only our immediate economy but has an impact on the high quality food we all can continue to enjoy.

[www.206prince.com](http://www.206prince.com)

### **OM INDIAN CUISINE**

Over the years, the chefs at OM have perfected the use of aromatic Indian spices and pride themselves on using a variety of fresh curries and ingredients. OM's menu offers traditional Indian dishes such as house-made samosas, savory tandoori bread, and various options for both vegetarian and non-vegetarian entrees. Putting an Indian twist on the culinary art and flavors of traditional Indian cuisine, OM offers the perfect combination of world-class hospitality and an exciting range of Food & Beverage selections that will surely have you coming back, time and time again.

[www.omindiancuisine.ca](http://www.omindiancuisine.ca)



## DINING: DIRECTORY

### FAMILY RESTAURANTS

**Bill's Sticky Fingers**

210 Saskatchewan Avenue E  
204-857-9999

**Jimmy's**

1746 Saskatchewan Avenue W  
204-239-0378

**Lita's Station**

904 Saskatchewan Avenue E  
204-240-1397

**Over the Coals**

232 Saskatchewan Avenue E  
204-239-4477

**Season's Family Restaurant**

1943 Saskatchewan Avenue W  
204-856-1077

**Tornado's Restaurant & Lounge**

1107 Saskatchewan Avenue W  
204-857-9300



### ASIAN CUISINE

**Boun's Lao Street Eatery**

116 2nd Street, Oakville  
204-267-2222

**Dick's Café**

134 Saskatchewan Avenue E  
204-857-4241

**Great Wall Chinese Restaurant**

324 5th Avenue NW  
204-857-6720

**May Mei's**

116 Saskatchewan Avenue E  
204-857-4555

**NayOrts (Sushi)**

40 Royal Road N  
204-872-5668

**Oriental Pearl**

10 Saskatchewan Avenue W  
204-857-6895

### COFFEE CULTURE

**Café on Prince**

6-206 Prince Avenue  
204-240-7010

**Tim Horton's**

550 Saskatchewan Avenue W  
204-857-5222

**Tim Horton's (West)**

2450 Saskatchewan Avenue W  
204-239-1215

### MEXICAN CUISINE

**Chronic Tacos**

237 Saskatchewan Avenue E  
204-239-4714

**Mole Guacamole**

177 Saskatchewan Avenue W  
204-692-1777





## INDIAN CUISINE

### Heatz

1800 Saskatchewan Ave. W  
204-857-1010

### Manitoba Restaurant & Lounge

Days Inn – Trans Canada Hwy 1  
204-857-9791

### OM Indian Cuisine

190 River Road  
204-240-2442

## NATIONAL CHAINS

### A & W

40-24th St NW  
204-857-8336

### Boston Pizza

2180 Saskatchewan Avenue W  
204-239-8200

### Burger King

2208 Saskatchewan Avenue W  
204-239-6552

### Chicken Chef

1310 Saskatchewan Avenue W  
204-239-0101

### Dairy Queen

200 Saskatchewan Avenue W  
204-857-6047

### Domino's Pizza

2275 Saskatchewan Avenue W  
204-857-5757

### KFC

1275 Saskatchewan Avenue W  
204-857-5321

### Little Caesars

302 Saskatchewan Avenue E  
204-239-5530

### Mary Brown's

1101 Saskatchewan Ave W  
204-692-1688

### McDonald's

25-25th Street NW  
204-857-6893

### Mr. Mike's Steakhouse Casual

2273 Saskatchewan Ave W  
204-239-5299

### Pizza Hotline

315 Saskatchewan Avenue W  
204-856-2222

### Popeye's Louisiana Kitchen

2257 Saskatchewan Ave W  
204-239-5055

### Subway (East)

315 Saskatchewan Avenue E  
204-239-4338

### Subway (West)

50-24th Street NW  
204-239-0028

### Tim Horton's

550 Saskatchewan Avenue W  
204-857-5222

### Tim Horton's (West)

2450 Saskatchewan Avenue W  
204-239-1215

## GOLF COURSE CLUBHOUSES

### Lake Shore Restaurant & Bar

1 Island Park  
204-857-6177

### Southport Golf Club

2655 Musketeer Road E  
204-428-3174

## PUB FARE

### Midtown Inn

177 Saskatchewan Avenue W  
204-857-6881

### Tavern United – Canad Inns Destination Centre

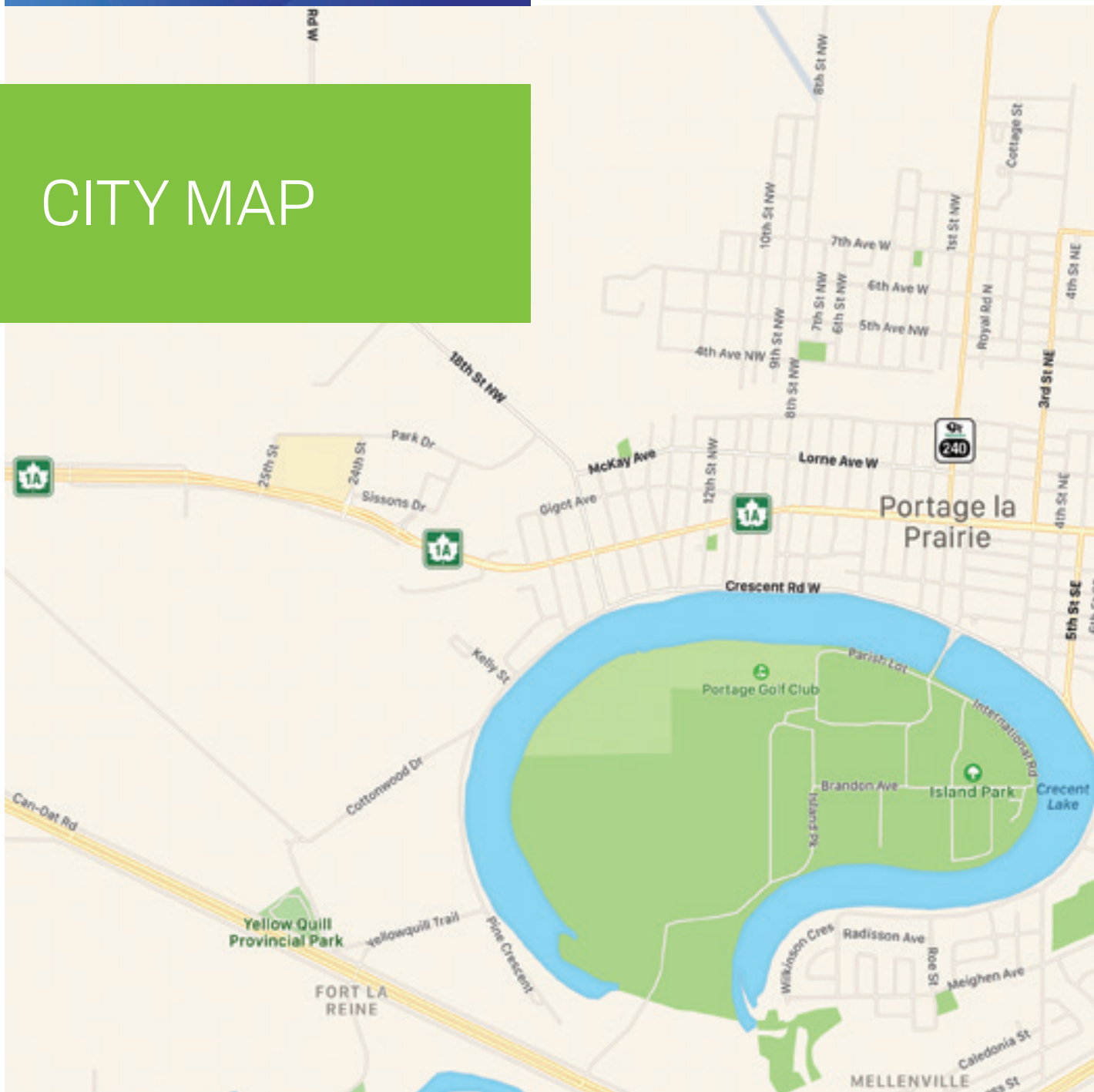
2401 Saskatchewan Avenue W  
204-857-9745

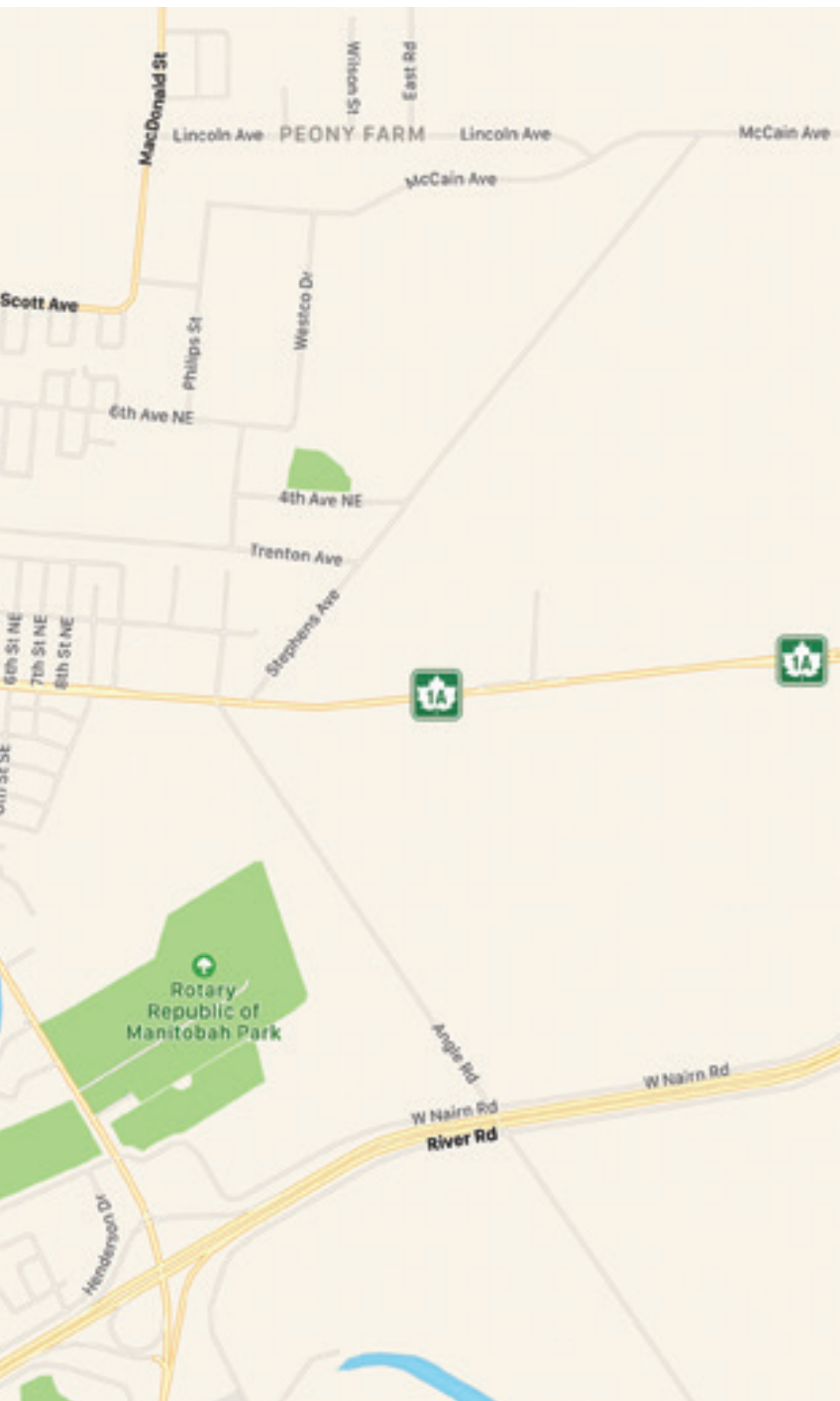


Bill's Sticky Fingers



# CITY MAP





**PORTAGE  
LA PRAIRIE**

MANITOBA, CANADA

*Island on the Prairies*



# EVENTS

Since 1872, the Portage Industrial Ag Society has been one of the biggest hosts of the summer schedule in Portage la Prairie, presenting the **PortageX**. Proud of its distinction as one of western Canada's longest running annual fairs, the event celebrates the best of the region with local crafters, ag displays and competition as well as a thrilling midway and a variety of entertainment sure to delight audiences from the young to the young at heart. You can learn more about this year's line up at [www.portageex.com](http://www.portageex.com)



Photo by Dennis Wiens



Photo by Gayle Loewen

Designated in 2017 as a signature event by City Council, the **Portage la Prairie Potato Festival** is an annual event for the whole family. Paying homage to our reputation as an agri-food hub in Manitoba, this event is FREE for all ages and includes live bands, children's entertainment and a variety of vendors and engaging activities and events through the weekend. Don't miss one of the event's most popular features – FREE French Fries! For the latest updates, be sure to visit [www.portagepotatofest.ca](http://www.portagepotatofest.ca)

Enjoy a day out at **Whoop & Hollar Folk Festival**! Whoop & Hollar celebrates local music, art, culture, community, and nature. This charming, intimate festival is set on a scenic woodlot southeast of Portage la Prairie, 1 km west of the Hoop and Holler Bend, on Treaty One land. The festival features a diversity of local music, two nights of tent camping, artisans, food, nature trails, a pollinator garden, and lively jam sessions. There's fun for people of all ages and walks of life, so come as you are and be yourself. The homegrown vibe is yours to discover!

[www.whoopandhollar.com](http://www.whoopandhollar.com)

Get lost in the 4 acre **Corn Maze** at the Fort la Reine Museum this Fall, and find all of the hidden signs along the way! The corn maze is open everyday from Mid-August to Mid-October (8:00am-8:00pm). Entry is by monetary donation.

[www.fortlareinemuseum.com](http://www.fortlareinemuseum.com)





# SHOPPING & DIRECTORY



There is delight in discovery when you explore a new place and are introduced to shops and services that you don't have at home. Whether it's a quick stop to grab a needed item for your travels or you're after that unique souvenir or gift to take home, you'll be delighted by the selection and convenience that our merchants provide. Allow yourself some time to explore beyond the shop windows and see what's in store for you. You'll be glad you did.

## ART GALLERY

**Prairie Fusion Arts & Entertainment**  
11-2nd Street N.E.  
Phone: 204-239-6029

## BOOK STORES

**Heritage Books & Gift Shoppe**  
1609 Saskatchewan Avenue W  
Phone: 204-857-8895

## CANNABIS DISPENSARIES

**Indigenous Bloom**  
79 Keeshkeemaquah Drive  
Phone: 204-814-0688

**Olina Cannabis Inc.**  
115 Saskatchewan Avenue E  
Phone: 204-857-4180

**Tweed**  
309 Saskatchewan Avenue E  
Phone: 204-515-7770

## CLOTHING & ACCESSORIES

**Blessings Collections**  
224 Saskatchewan Avenue E  
Phone: 204-870-7485

**FOIL Salon**  
489 Saskatchewan Avenue E  
Phone: 204-240-4665

**Keystone Sports**  
170 Saskatchewan Avenue W  
Phone: 204-857-8982

**Mark's Work Wearhouse**  
Unit 1, 2352 Sissons Drive  
Phone: 204-239-8220

**MCC Thrift Store**  
149 Saskatchewan Avenue E  
Phone: 204-239-4836

**Mil-Jeanne Flowers & Axcenz**  
102 Saskatchewan Avenue E  
Phone: 204-857-6886

**Olina Fashions**  
2 Saskatchewan Avenue W  
Phone: 204-240-2000

**Styled With Meraki**  
1200 Saskatchewan Avenue W  
Phone: 204-903-0149

**The Cellar Door**  
610 Saskatchewan Avenue E  
Phone: 204-857-9991

**Red Apple (The Bargain! Shop)**  
80 Saskatchewan Avenue E  
Phone: 204-239-7123

**Warehouse One – The Jean Store**  
2352 Sissons Drive, Unit 8  
Phone: 204-239-0061

## CONVENIENCE STORES

**7-11 Store East**  
718 Saskatchewan Avenue E  
Phone: 204-856-2010

**7-11 Store West**  
1221 Saskatchewan Avenue W  
Phone: 204-856-2000

**Co-op Gas Bar - Oakville**

160 2nd Street, Oakville  
Phone: 204-267-2611

**FasNak**

17-3rd Street N.E  
Phone: 204-857-4289

**Mac's Convenience Store**

323 Saskatchewan Avenue E  
Phone: 204-239-6404

**Midtown Market**

606 Saskatchewan Avenue W  
Phone: 204-238-7172

**Mike's 5th Avenue Grocery**

140-5th Avenue N.E  
Phone: 204-857-3762

**Northside Market**

409-8th Street N.W  
Phone: 204-239-5444

**Potage Co-op Marketplace  
Convenience Store / Gas Bar**

2273 Saskatchewan Avenue W  
Phone: 204-856-2100

**Portage Co-op River Road  
Convenience Store / Gas Bar**

150 River Road  
Phone: 204-856-2102

**St. Ambroise General Store**

Hwy 430, St. Ambroise  
Phone: 204-243-2549

**DEPARTMENT STORES****Canadian Tire**

2445 Saskatchewan Avenue W  
Phone: 204-857-3408

**Dollarama**

2200 Saskatchewan Avenue W  
Phone: 204-856-0440

**Great Canadian Dollar Store**

103 Saskatchewan Avenue W  
Phone: 204-400-2776

**Red Apple**

80 Saskatchewan Avenue E  
Phone: 204-239-7123

**Wal-Mart**

2348 Sissons Drive  
Phone: 204-857-5011

**DRYCLEANERS & LAUNDRY****Perth's (Blue Moon Water)**

220 Saskatchewan Avenue W  
Phone: 204-857-7791

**Portage Laundromat**

106 Saskatchewan Avenue W  
Phone: 204-857-3580

**Washstop Laundry**

60-24th Street N.W  
Phone: 204-239-1481

**FLORAL & GIFTWARE****Always a Florist**

1625 Saskatchewan Avenue W  
Phone: 204-239-5032

**Heritage Books & Gift Shoppe**

1609 Saskatchewan Avenue W  
Phone: 204-857-8895

**Mil-Jeanne Flowers & Axcenz**

102 Saskatchewan Avenue E  
Phone: 204-857-6886

**Solomon's Home Garden Gift**

55-25th Street NW  
Phone: 204-239-6132

**GROCERY STORES****Fil-mart Corp.**

1830 Saskatchewan Avenue W  
Phone: 204-632-4206

**OS Oakville Supermarket /  
Bigway Foods**

111 2nd Street, Oakville  
Phone: 204-267-2433

**Panko's Food Centre**

1630 Saskatchewan Avenue W  
Phone: 204-239-5151

**Homestead Co-op Food Store**

2275 Saskatchewan Avenue W  
Phone: 204-856-2135

**Portage Supermarket / Family  
Foods**

402 Saskatchewan Avenue E  
Phone: 204-239-1666

**Sobey's Garden Market**

2100 Saskatchewan Avenue W  
Phone: 204-857-4700

**HEALTH CLUBS****Central Plains RecPlex Building**

79 Centenaire Drive, Southport  
Phone: 204-428-6050

**Portage Fitness Co-op**

7 - 2401 Saskatchewan Avenue W  
Phone: 204-856-0991

**Viterra Wellness Centre Stride**

Place, 245 Royal Road S  
Phone: 204-857-7772

**HEALTH FOOD STORES****Honey Bee Health Foods**

1609 Saskatchewan Avenue W  
Phone: 204-856-0264

**Supplement King**

602 Saskatchewan Avenue W  
Phone: 204-692-3835

**LIQUOR STORES & VENDORS****Midtown Motor Inn Vendor**

177 Saskatchewan Avenue W  
Phone: 204-857-6881

**MLCC Liquor Store (East)**

300 Saskatchewan Avenue E  
Phone: 204-856-2170

**MLCC Liquor Store (West)**

2255 Saskatchewan Avenue W  
Phone: 204-856-1159

**Oakville Motor Inn**

650 Hwy 331, Oakville  
Phone: 204-267-2533

**The Bottle Stop – Canad Inns**

2401 Saskatchewan Avenue W  
Phone: 204-857-9745



## LOCAL MARKETS

### Mayfair Farms

310 Brandon Avenue  
Phone: 204-857-4581

### Portage Farmers' Market

Visit the Facebook page at Portage Farmers Market for up-to-date location

### The Little Red Barn

Highway 1 - 3 miles West of Oakville turn-off

## MUSIC CENTRES

### A/V Electronics

222 Saskatchewan Avenue W  
Phone: 204-239-4020

### The Source

Unit 4, 2352 Sissons Drive  
Phone: 204-251-9557

## OFFICE SUPPLIES

### Mayfair Print Shoppe & Office Supplies

208 Saskatchewan Avenue E  
Phone: 204-239-6000

## PHARMACIES

### Hill's Drug Store

200 Saskatchewan Avenue E  
Phone: 204-857-4631

### Homestead Co-op Pharmacy

2275 Saskatchewan Avenue W  
Phone: 204-239-0458

### Pharmasave

308 Saskatchewan Avenue E  
Phone: 204-239-6923

### Shoppers Drug Mart

124 Saskatchewan Avenue E  
Phone: 204-857-7891

### The Medicine Shoppe Pharmacy

602 Saskatchewan Avenue W  
Phone: 204-239-5100

### Wal-Mart

2348 Sissons Drive  
Phone: 204-857-5011

## SPORTING GOODS

### Keystone Sports

170 Saskatchewan Avenue W  
Phone: 204-857-8982

### MacDonald's Sporting Goods

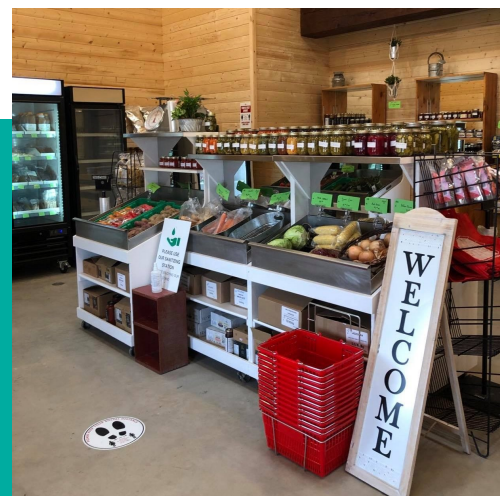
246 Saskatchewan Avenue W  
Phone: 204-857-3496

### Two Tired Boys

2450 Saskatchewan Avenue W  
Portage la Prairie Mall  
Phone: 204-857-2460



Facebook - The Little Red Barn



# 40 THINGS TO SEE & DO

	INDOORS (I) / OUTDOORS (O)	NEED WALKING SHOES	SEASONAL	YEAR ROUND	ADMISSION/TICKETS REQUIRED	EQUIPMENT NEEDED	RENTAL EQUIPMENT AVAILABLE	PETS ALLOWED	FOOD/CONCESSION AVAILABLE	MEETING ROOM/BANQUET SPACE	WHEELCHAIR ACCESSIBLE
<b>Active Transportation Routes</b> Crescent Lake Walkway/ Island Park / North-end Railway	O	■		■				■			■
<b>Arboretum</b> Located on Island Park	O	■		■				■			■
<b>BDO Centre for the Community</b> 204-856-1075 / 390-1st Street NW	I			■					■	■	■
<b>Berry Picking (Strawberries, Raspberries, Saskatoons)</b> Mayfair Farms / Connery's Farm / Jefferies / Patten Acres	O	■	■								■
<b>Central Plains Rec Plex</b> 204-428-6050 / 75 Centenaire Drive, Southport	I	■		■	■		■		■		■
<b>Community Playgrounds</b> Island Park / Koko Platz Rec Centre / Simplot Central Park	O	■		■				■			
<b>Corn Maze</b> 204-857-3259 / 2652 Saskatchewan Avenue East	O	■	■		■			■			■
<b>CP Rail Museum &amp; Model Train Display</b> 251 3rd Street NE, Portage la Prairie	I			■	■					■	■
<b>Cross Country Ski Trails</b> Portage Golf Club	O		■		■	■		■			
<b>Deer Pen</b> Island Park	O	■		■				■			■
<b>Delta Beach</b> 26 kms north of Portage la Prairie	O		■						■		■
<b>Delta Marsh</b> 24 kms north of Portage la Prairie	O	■		■				■			■
<b>Disc Golf Course</b> Island Park	O	■	■				■				■





	INDOORS (I) / OUTDOORS (O)	NEED WALKING SHOES	SEASONAL	YEAR ROUND	ADMISSION/TICKETS REQUIRED	EQUIPMENT NEEDED	RENTAL EQUIPMENT AVAILABLE	PETS ALLOWED	FOOD/CONCESSION AVAILABLE	MEETING ROOM /BANQUET SPACE	WHEELCHAIR ACCESSIBLE
<b>Farmers' Market</b> 211 Saskatchewan Avenue West OR Stride Place	I/O	■		■					■		■
<b>Fort la Reine Museum</b> 204-857-3259 / 2652 Saskatchewan Avenue East	I/O	■	■		■			■	■	■	■
<b>Herman Prior Centre</b> 204-857-6951 / 40 Royal Road North	I			■			■		■	■	■
<b>Kayak / Canoe Crescent Lake</b> Crescent Lake	O		■				■	■			
<b>Keeshkeemaquah Gaming Centre</b> 204-856-1220 / 5008 Crescent Road West	I			■					■	■	■
<b>Oakville Community Hall</b> 204-267-2741 / 55 PTH 331; Oakville	I			■						■	■
<b>Oakville Curling Club</b> 204-267-2612 / 525 2nd Avenue; Oakville	I		■			■			■	■	
<b>Outdoor Ice Skating Trail</b> Crescent Lake	O		■			■		■			■
<b>Portage Curling Club</b> 204-857-5411 / 2401 Saskatchewan Avenue West	I		■				■		■		■
<b>Portage Exhibition Grounds</b> 204-857-3231 / Located on Island Park	I/O	■	■					■		■	■
<b>Portage Golf Club</b> 204-857-6177 / Located on Island Park	O	■	■		■		■		■	■	■
<b>Portage Regional Library</b> 204-857-4271 / 40B Royal Road North	I			■						■	■
<b>Portage Spillway – Wayside Park</b> 1 km south of the Portage la Prairie bypass	O	■		■				■			■
<b>Portage Terriers - MJHL Team</b> 204-857-7772 / 245 Royal Road South	I		■		■				■		■



	INDOORS (I) / OUTDOORS (O)	NEED WALKING SHOES	SEASONAL	YEAR ROUND	ADMISSION/TICKETS REQUIRED	EQUIPMENT NEEDED	RENTAL EQUIPMENT AVAILABLE	PETS ALLOWED	FOOD/CONCESSION AVAILABLE	MEETING ROOM/BANQUET SPACE	WHEELCHAIR ACCESSIBLE
<b>Prairie City Cinema</b> 204-857-9233 / 225 Prince Avenue	I			■	■				■		■
<b>Prairie Fusion Arts Centre</b> 204-239-6029 / 11-2nd Street NE	I/O	■	■					■		■	■
<b>Republic of Manitobah Park</b> 204-857-7772 / 125 Cambridge Street	O	■		■				■			■
<b>Skate Park</b> 390-1st Street NW	O		■			■		■			■
<b>Shindleman Aquatic Centre</b> 204-857-7772 / 245 Royal Road South	I			■	■	■			■		■
<b>Southport Bowl</b> 204-428-6050 / 75 Centenaire Drive, Southport	I			■	■		■		■		■
<b>Southport Golf Course &amp; Driving Range</b> 204-428-3174 / 100 Musketeer Road, Southport	O	■	■		■		■	■			■
<b>Splash Island</b> 204-857-7772 / 260 Road Road South	O		■		■	■			■		■
<b>St Ambroise Provincial Park</b> St Ambroise	O			■	■			■	■		■
<b>Stride Place</b> 204-857-7772 / 245 Royal Road South	I			■					■	■	■
<b>Tennis Courts</b> Island Park	O		■			■					■
<b>William Glesby Centre</b> 204-239-5591 / 11 – 2nd Street NE	I			■	■					■	■
<b>World's Largest Coca Cola Can</b> 2445 Saskatchewan Avenue West	O			■				■			■

# HISTORY & HERITAGE







**W**ithin minutes of your arrival, you will recognize why Fort la Reine Museum holds distinction in the Province as a Manitoba Star Attraction. The site celebrates the heritage of the Canadian prairies and the history of both the City and Rural Municipality of Portage la Prairie. Visitors find themselves immersed in another time in an environment that includes 15 different buildings and thousands of artifacts to discover. The five-acre site takes you into the lives of the early settlers – their homes, their schools, and their business and trade. The museum also pays homage to the nationwide development of rail and features ‘Le Rideau’, the personal business rail car of Sir William Van Horne.

Open seasonally from May to October, the museum continues to further develop its displays and site as well as hosting a variety of travelling exhibits as well in addition to their permanent collection. Special events that celebrate local culture and allow for a more interactive connection to our past also highlight the venue’s annual schedule. There is much to share, learn and discover at Fort La Reine and you can find more at [www.fortlareinemuseum.com](http://www.fortlareinemuseum.com)

Incorporated in 1992, Portage Heritage Inc. was established to promote the legacy of the region and to assist in the preservation of historic places. Their most significant project has been the **CPR Station and Heritage Park** on the south side of the current CP Rail line at Third Street NW which began in 2003. The building is home to the local model railroad club and work continues to provide a lasting showcase of the significance of the railroad industry in the area as part of their display development. Portage Heritage Inc. has also developed a series of self-guided **Historic Tours** which include routes in both the City and the Rural Municipality to allow visitors to retrace the steps of some of the most significant moments in our region’s history. Their website [www.cprstationportage.ca](http://www.cprstationportage.ca) shares more about the group that their initiatives.

One thing you’ll notice as you explore Portage la Prairie is that the city is home to some well-maintained **historic architecture** and many designated heritage buildings. From the home of former Canadian Prime Minister Arthur Meighen, to other residential and commercial properties, the elegance from the era of stone architecture can be admired and celebrated in many neighborhoods, especially near the City’s core. The Portage la Prairie area is home to 139 designated heritage sites, easily located on the **Manitoba Historical Society** database at [www.mb1870.org/mhs-map/search](http://www.mb1870.org/mhs-map/search)



# ACCOMMODATIONS

## BE OUR GUEST

**P**icture your ideal vacation getaway. Does it include the plush comforts and conveniences of home with an opportunity to pamper yourself with the luxuries you don't allow yourself at home? Is it the opportunity to unplug and disconnect and re-introduce yourself to your passions and interests outside of your professional life? Maybe the hospitality of a quiet room and a home-cooked breakfast offers the welcoming embrace that signals that you have truly escaped the pace of your increasingly busy schedule.

The Portage la Prairie region is home to a selection of hotels, bed & breakfast venues and campgrounds that allow you to wrap yourself in the comfort that you crave most.

Super 8 Portage la Prairie

Barker Building

HOTELS

**Canad Inns Destination Centre**  
2401 Saskatchewan Ave W  
Phone: 204-857-9745  
Toll Free: 1-888-33CANAD (22623)  
www.canadinns.com

**Days Inn**  
Highway 1 & Yellowquill Trail  
Phone: 204-857-9791  
www.daysinn.com

**Hi-Way Motel**  
2010 Saskatchewan Ave W  
Phone: 204-857-8771  
info@hiwaymotel.com  
www.hiwaymotel.com

**Microtel Inn & Suites**  
5100 Crescent Rd W  
Phone: 204-240-8550  
www.wyndhamhotels.com/en-ca/microtel/

**Sunset Motel**  
2465 Saskatchewan Ave W – Highway 1A West  
Phone: 204-857-7031

**Super 8 Portage la Prairie**  
Highway 1A West  
Phone: 204-857-8883 Toll Free: 1-800-800-8000  
www.super8portage.com

**Westgate Inn Motel**  
1010 Saskatchewan Ave E  
Phone: 204-239-5200

**Yellow Quill Motel**  
45-20th Street South West  
Phone: 204-857-3086 Toll Free: 1-800-414-7365

**Barker Building**  
100 Musketeer Road East, Southport  
Phone: 204-428-6030 Toll Free: 1-800-558-4680  
propertymanagement@southport.ca  
www.southport.ca/44/barker-building

**Mynarski House**  
230 Centenaire Drive, Southport  
Phone: 204-428-6030 Toll Free: 1-800-558-4680  
www.propertymanagement@southport.ca  
www.southport.ca/45/mynarski-house

**Oakville Motor Hotel**  
650-331 Highway, Oakville, MB  
Phone: 204-267-2533



HOTEL AMENITIES	MICROTEL	CANAD INNS	DAYS INN	HI-WAY MOTEL	OAKVILLE MOTOR HOTEL	SUNSET MOTEL	SUPER 8	WESTGATE INN MOTEL	YELLOW QUILL MOTEL	BARKER BUILDING	MYNARSKI HOUSE
# of Rooms	73	92	60	14	4	12	58	25	16	52	32
Capacity	292	400	248	42	12	N/A	200	94	56	104	32
Wheelchair Access	X	X	X	X	X	X	X			X	
Dining Room		X	X								
Coffee Shop		X	X								
Room Service		X									
Cocktail Lounge		X	X		X						
Games Room (VLTs)		X	X		X						
Conference Facilities	X	X	X				X			X	X
Meeting Rooms	X	X	X				X			X	X
Indoor Pool	X	X	X				X				
Exercise Room	X	X	X							X	X
WiFi	X	X			X			X	X	X	X
Motor Coach Parking	X	X	X	X	X	X	X	X	X	X	X



## ACCOMMODATIONS



## BED & BREAKFASTS

- 1 **Farm Away Retreat**  
Rd 64N Portage a Prairie  
Phone: 204-870-1564  
hello@farmawayretreat.com  
www.farmawayretreat.com
- 2 **Roycan's Country Haven**  
**Bed & Bale for equestrian overnights**  
Portage la Prairie, off highway #1A  
Phone: 204-239-4854  
info@roycan.ca  
www.roycan.ca

## CAMPGROUNDS

- 3 **Creekside Campground**  
13 km East on #1 Highway  
Phone: 204-267-7002  
bookings@creeksidecampingrvpark.com  
www.creeksidecampingrvpark.com
- 4 **Delta Beach Campground**  
Just steps away from Delta Beach on Lake Manitoba, enjoy freshly landscaped sites and newly upgraded washroom facilities. 31 partially serviced and 18 unserviced sites are available for nightly or seasonal bookings. 25 km North on Highway 240 Phone: 204-857-7772  
info@prra.ca  
www.DeltaBeachCampground.ca
- 5 **Lynch's Point Campground**  
North of Westbourne on Lake Manitoba Junction 242 off Yellowhead Route & 13 km North (Approx. 40 km from Portage)  
Phone: 204-274-2725
- 6 **Miller's Campground**  
5 km east on #1 Highway Phone: 204-857-4255  
info@millerscampground.com  
www.millerscampground.com



- 7 **Ofty's Riverside Campground**  
Northeast of Westbourne on Lake Manitoba Junction 242 off Yellowhead Route & 3 km N (Approx. 40 km from Portage)  
Phone: 204-274-2705 Fax: 204-274-0039  
oftys@mts.net  
www.oftysriversidecampground.com
- 8 **PortageX Campground**  
Conveniently located on the Exhibition Grounds near the Portage Golf Course, Splash Island Water Park, Island Park Family Park & Playground, and the Stride Place.  
Phone: 204-857-3231  
www.portageex.com
- 9 **Sportsman's Corner**  
located off highway #16 north of Westbourne, 30 km from highway #1. From highway #16, turn east onto N. Thompson Rd just north of the Whitemud River. Cross the railway tracks and continue north. Drive 7 km, until you see Sportsman's Corner boat sign, turn right and follow the road to the campground. Phone: 204-274-2015  
www.sportsmanscorner.ca

# BEYOND CITY LIMITS

## ATTRACTIONS

1

### DELTA BEACH

Approx. 30 km from Portage (21 min.)  
15 km North on MB-240  
1.6 km West on MB-227  
9 km North on Road 37W  
Turn Left at the T intersection

2

### DELTA MARSH WILDLIFE MANAGEMENT AREA

Approx. 28 km from Portage (25 min.)  
15 km North on MB-240  
1.6 km West on MB-227  
9 km North on Road 37W  
Turn Right at the 'T' intersection

3

### TIN TOWN

Approx. 28 km from Portage (25 min.)  
15 km North on MB-240  
6.6 km East on MB-227  
6.3 km North on 32W

4

### ST. AMBROISE PROVINCIAL PARK

Approx. 55 km from Portage (37 min.)  
16.9 km East on Trans Canada Highway  
34.2 km North on MB 430  
2.5 km West at Sign for  
St. Ambrose Provincial Park

Photo by John Nielsen



Photo by Dennis Wiens

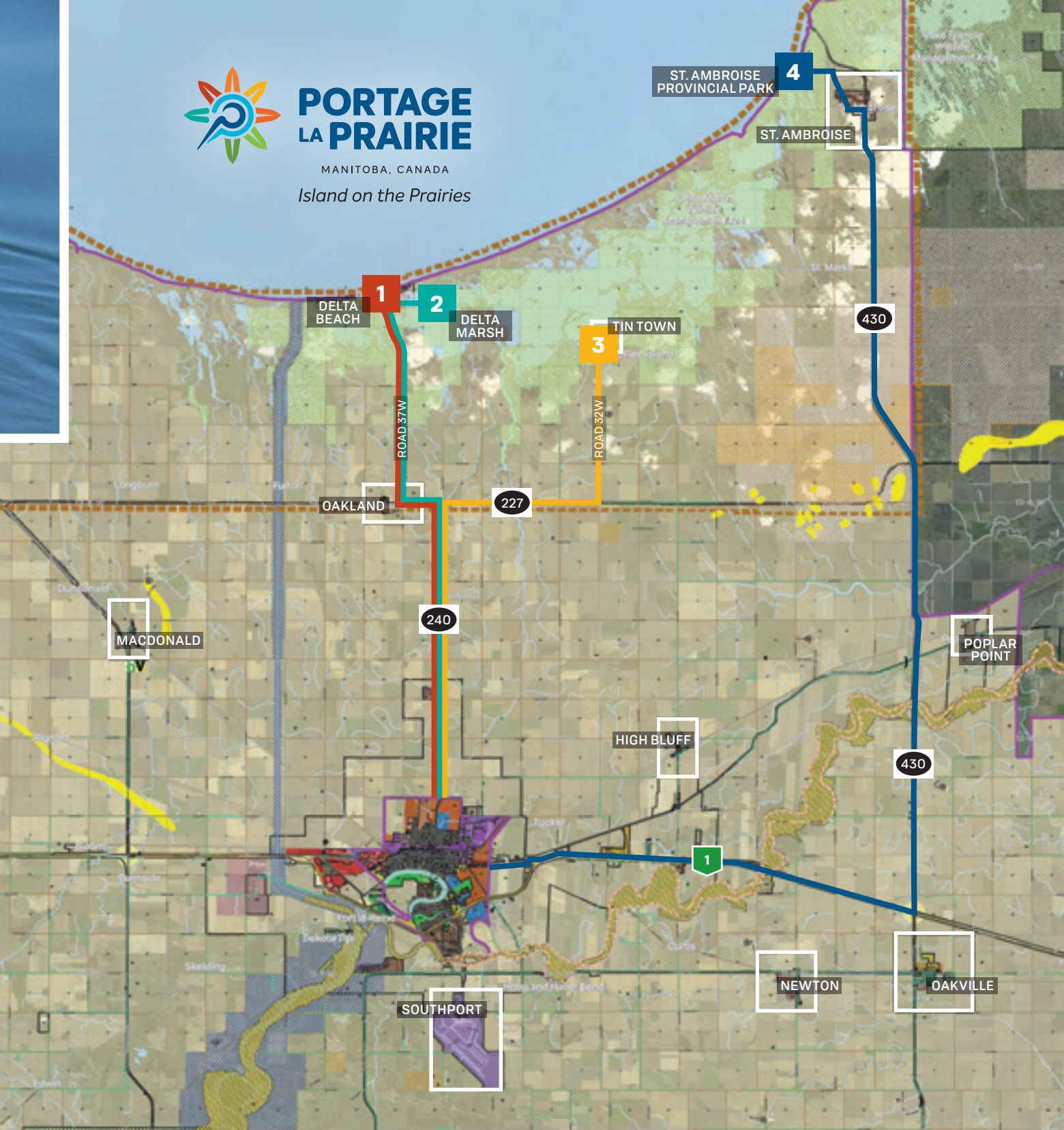




# PORTAGE LA PRAIRIE

MANITOBA, CANADA

*Island on the Prairies*







**PORTAGE  
LA PRAIRIE**

MANITOBA, CANADA

[www.islandontheprairies.ca](http://www.islandontheprairies.ca)